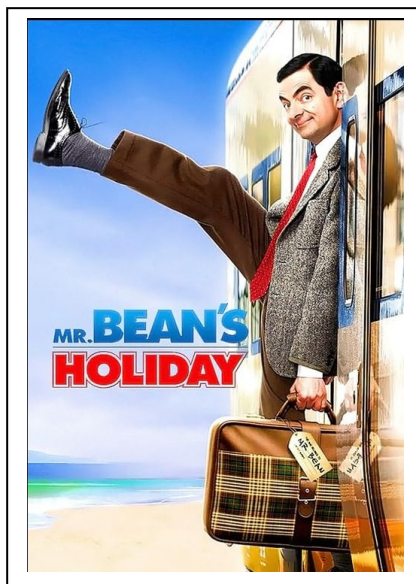
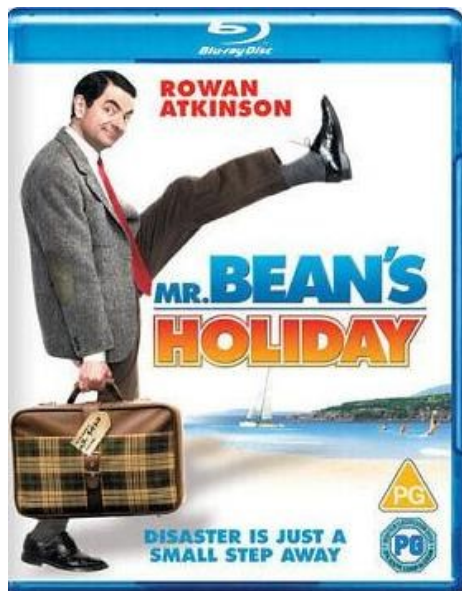


The Paragon Multimedia DVD, VHS Collection

Title: **Mr Bean's Holiday** (Rowan Atkinson)

[1 Disc] [Blu-ray](#)

Library Image



ISBN: 5050582805895

Information

Release Title: **Mr Bean's Holiday** 30th March 2007 (United Kingdom)

Publication:

Countries of origin: United Kingdom, France, Germany, United States

Release date: United States, – 24th August 2007

AKA: Also known as: Bean 2

Genres: Comedy, Family

Disc Nos. 1

Certification: PG

Duration: 1hr 30m

Region Code:

Region:

Product Code:

MPN:

EAN:

UPC:

Languages: English, French, Spanish, Russian,

Filming locations: Oppède le Vieux, Luberon, Vaucluse, France (war scene set in the 1940s)

Sound mix: SDDS, Dolby Digital

Aspect Ratio: 1.85:1

Mr. Bean's Holiday



Theatrical release poster

Directed by	Steve Bendelack
Screenplay by	Hamish McColl Robin Driscoll
Story by	Simon McBurney
Based on	Mr. Bean by Rowan Atkinson Richard Curtis
Produced by	Peter Bennett-Jones Tim Bevan Eric Fellner
Starring	Rowan Atkinson Emma de Caunes Max Baldry Willem Dafoe
Cinematography	Baz Irvine
Edited by	Tony Cranstoun
Music by	Howard Goodall
Production companies	StudioCanal Working Title Films Tiger Aspect Films
Distributed by	Universal Pictures ^[1]
Release dates	30 March 2007 (United Kingdom) 24 August 2007 (United States)
Running time	89 minutes
Countries	United Kingdom France ^[2] United States ^[2]
Languages	English French Russian
Budget	\$25 million ^[3]
Box office	\$232.2 million ^[1]

1. Title: Mr Bean's Holiday (Rowan Atkinson)

Storyline

On a rainy day in London, Mr. Bean wins a holiday trip to Cannes, a video camera, and €200 in a raffle. Upon arriving in France, Bean causes chaos while trying French seafood cuisine at Le Train Bleu and asks Russian film director, Emil Ducheovsky, to film him boarding his train using his video camera at the Gare de Lyon. However, the two keep doing retakes at Bean's request until the train leaves with Bean and Ducheovsky's son, Stepan, onboard and Ducheovsky left behind.

Bean and Stepan bond and get off together at the next station, where Ducheovsky's train passes through the station without stopping; he holds up a sign with a mobile phone number written on it for Stepan to call, but due to inadvertently obscuring the last two digits, Bean unsuccessfully calls the number numerous times. Bean and Stepan board the next train stopping, but are ejected in Cavaillon as Bean had accidentally left his wallet, passport and ticket on the telephone booth.

To earn money, Bean busks as a mime/singer and buys himself and Stepan food and bus tickets to Cannes. However, Bean's ticket gets caught in the wind and onto the foot of a chicken, which is then packed into a farmer's truck that Bean chases via bicycle to a farm, where he is unable to retrieve his ticket due to the large number of chickens there. Deciding to continue his journey alone on foot, Bean wakes up on a quaint French village under attack from Nazi soldiers, which is revealed to be the set of a yogurt commercial directed by American filmmaker Carson Clay. Bean briefly stars in the commercial as one of the soldiers before being dismissed for showing his video camera in the advert, and accidentally causes the set to explode while recharging his camera.

Continuing to hitch-hike, Bean is picked up by a Mini identical to his own driven by aspiring actress Sabine, who is on her way to the Cannes Film Festival, where her debut film directed by Clay, *Playback Time*, is to be presented. The pair stop at a café, where Bean reunites with Stepan and Sabine decides to take him with them, believing Stepan to be Bean's son. The next morning, the trio arrive in Cannes thanks to Bean driving through the night after Sabine falls asleep.

At a petrol station, Sabine sees on the news that she and Bean are suspected of kidnapping Stepan. In a rush to *Playback Time*'s premiere which is starting in merely an hour, she decides not to head to the police to clear the misunderstandings and instead has Bean and Stepan disguised as her mother and daughter to avoid detection at the festival. During the premiere, the audience shows disinterest in the film, and Sabine discovers that her role has been cut, prompting Bean to plug his video camera into the projector and replace the film's visuals with his video diary. The camera's footage of Bean's shenanigans surprisingly aligns well with the film's narration, and Clay, Sabine and Bean all receive a standing ovation while Stepan is reunited with his parents.

Bean exits through the theatre's back door and finally arrives at the Cannes beach as desired, where he, Sabine, Stepan, Clay, and a group of other people mime a large musical finale to the song "La Mer".

Quick Storyline: Mr. Bean enters a church raffle and wins a vacation trip to France as well as a camcorder. After boarding a Eurostar train and arriving in Paris, the French language proves a barrier for Bean, as he struggles to get across the city to catch a train to the south of France from the Gare de Lyon. Taking time to order a meal, he finds the consumption of a seafood platter to be a challenge. Just before catching his train, he asks Emil, a Russian film director on his way to be a judge at the Cannes Film festival to use his camcorder to record his boarding, but accidentally causes Emil being left behind at the station. Bean attempts to cheer up the director's son Stepan as the train continues south but matters are made more hectic by the fact that Emil has reported his son to have been kidnapped and Bean losing his wallet and essential travel documents at a pay phone where he and Stepan attempt to contact Emil. Heading in the direction of Cannes, Bean finds himself in the cast and disrupting the flow of a commercial being shot by the egotistical director Carson Clay. He and Stepan finally hitch a ride with the young and vivacious actress Sabine who is heading to Cannes to attend the premiere of Clay's film, in which she appears. After Bean sneaks into the showing, his camcorder images are destined to enliven the proceedings. — Brian Greenhalgh IMDb

Cast

Rowan Atkinson as Mr. Bean
Emma de Caunes as Sabine
Max Baldry as Stepan Duchevesky
Willem Dafoe as Carson Clay
Jean Rochefort as the Maître d'Hôtel
Karel Roden as Emil Duchevesky
Steve Pemberton as The Vicar
Catherine Hosmalin as Ticket Inspector
Urbain Cancelier as Bus Driver
Stéphane Debac as Traffic Controller
Julie Ferrier as The First AD
Lily Atkinson as Lily ^{Wiki}

Parental Guidance

Certification

Argentina:Atp Australia:PG Brazil:Livre Canada:G (British Columbia) Denmark:A Egypt:13+ (self-applied) Finland:K-7 France:Tous publics Germany:0 Greece:K Hong Kong:I India:U Indonesia:13+ (self-applied) Ireland:PG Israel:6+ (self-applied) Italy:T Japan:G Lithuania:N-7 Malaysia:U Netherlands:AL New Zealand:PG Nigeria:G Norway:A (2019, TV rating) Norway:A (2007, cinema rating) Peru:Apt Philippines:G (self-applied) Poland:NC (self-applied) Portugal:M/6 Russia:6+ Saudi Arabia:G Singapore:PG South Africa:A South Korea:All Spain:A Sweden:Btl Switzerland:7 (canton of Geneva) Switzerland:7 (canton of Vaud) Taiwan:GP (original rating) United Kingdom:PG United States:G (certificate #43342) United Arab Emirates:7+ (self-applied)

Sex & Nudity – None, **Violence & Gore** - Mild , **Profanity**- None, **Alcohol, drugs & Smoking**- None, **Frightening & Intense Scenes** - Mild

